

Case Study**Roxby Downs Council
Mobile LiDAR Scan****Project Details****Client name**

Roxby Downs Council

Order date

11 June 2019

Delivery date

26 July 2019

Contract Type

Training and Demonstration

Contract value

\$10,000

Key Personnel

LiDAR Specialist - Sean Robson

Operations Manager - Rod Mitchell

“Enerven worked collaboratively with Roxby Downs Council on this project to give them a better understanding of LiDAR technology and how to interpret the data

The Customer

Roxby Downs Council is the local government area covering the town of Roxby Downs and the Olympic Dam mine site in South Australia. It has an area of 110 km² and an estimated population of nearly 4,500. Roxby Council was built by WMC Resources in partnership with the State Government in 1982, as part of the provisions of the Roxby Downs (Indenture Ratification) Act. The Council are responsible for all utility assets in the township.

The Opportunity

The Council are reviewing their asset management plan and required a means of creating up to date location data of their assets.

LiDAR (Light Detection and Ranging) technology collects highly accurate spatial data that informs 3D representation of a surveyed area, capturing any asset at a particular point in time and space.

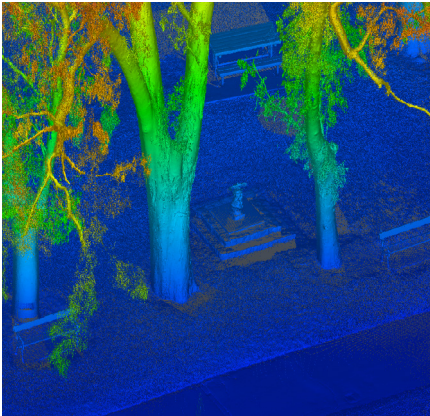
The Solution

Enerven provided a LiDAR scan to Roxby Downs council as well as a day of training to help the Council get started with investigations using mobile LiDAR data and training to interpret the data that was collected during the scan.

We used our custom-built mobile LiDAR vehicle and LiDAR processing computer to capture and process the data; which operates with Topcon IP-S2 HD. It collects 1.3 million points per second at a range of 100 metres, with a 360-degree field of view. It also has on-board inertial measurement unit and external wheel encoders, in addition to GPS positioning. The technology has the ability to GEO-reference the data collected - positioning the data into its global surroundings so the operator can pin-point the exact location of the image in reference to the entire asset.

While other surveyors may offer similar data capture services, they often don't have the equipment or capability to interpret the data, analyse it and present it in a meaningful format that can help inform next steps.





Key Capabilities

Our capabilities include scanning, data input, analysis and processing through to presentation of the insights.

Our team is highly experienced in operating both static and mobile LiDAR equipment and will find an appropriate option for your asset and situation based on the uses and benefits.

Why Enerven?

Our experience in the market place, combined with expertise and industry knowledge, makes Enerven attractive to industry leaders such as Oz Minerals, Lendlease, AGL and BHP Billiton for their energy infrastructure needs.

Enerven invest heavily in the latest technology and the professional development of our staff, which means we combine experience and history with innovation and technology to deliver solutions that address the evolving energy distribution requirements of the community.

With a strong supplier and partner network behind us, our highly

skilled staff work closely with you to fully understand your specific needs and vision, and will tailor a solution to suit.

Delivering the highest standard of work in a safe and environmentally sustainable manner is our top priority, and we have an outstanding track record to prove it.

We focus on building long-term relationships with our clients, we're committed to working with you for the lifecycle of your project and beyond.

Who We Are

Enerven provides a range of construction and maintenance including services, mobile & static LiDAR to clients both within SA and nationally. We believe innovations and technology will continue to drive efficiencies, but no more so than the experience, knowledge and capabilities of our people.

Contact Us

1 Station Place,
Hindmarsh SA 5007

1300 334 523

enquiries@enerven.com.au

www.enerven.com.au

Enerven is a wholly owned subsidiary of SA Power Networks operating independently and is the business name used by Enerven Energy Infrastructure Pty Ltd (ABN 31 621 124 909)

Enerven is accredited to AS/NZS ISO 14001 and is compliant to all regulatory requirements. We maintain full compliance with Australian Standard AS/NZ 4801 and have achieved the internationally recognised ISO18001 accreditation.